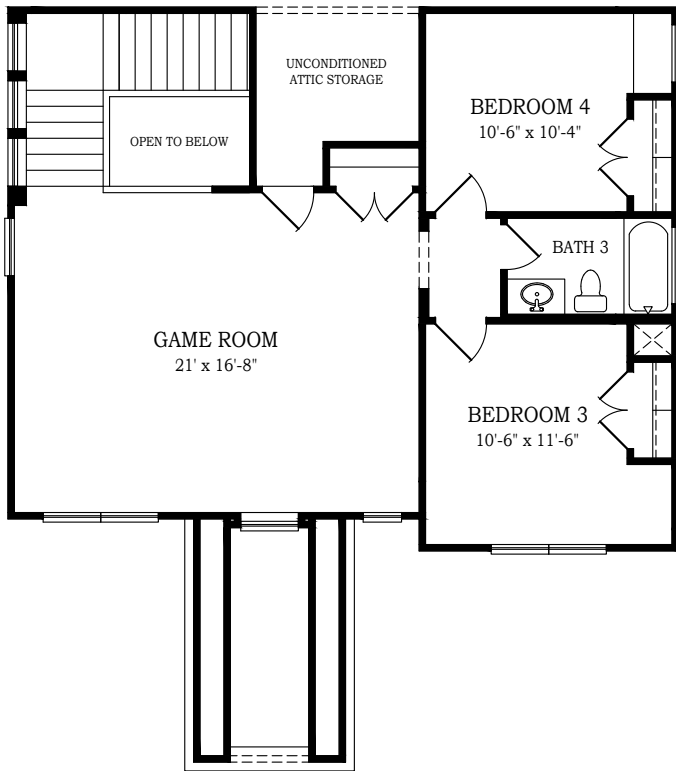




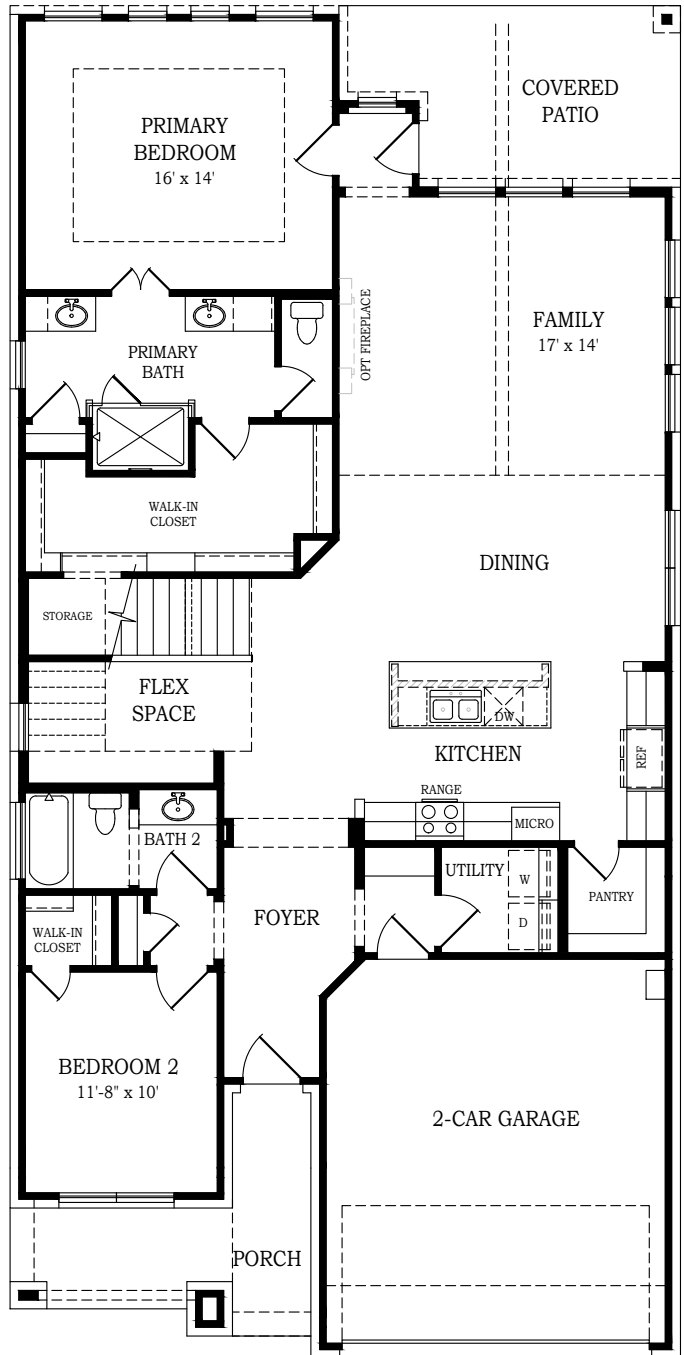
# DAYTON

CHESMAR.com

Plan 252935 | 2529 Square Footage | 4 Bedrooms | 3 Baths | 2-Car Garage



*2nd Floor Plan*



*1st Floor Plan*



Square footage and room dimensions are approximate and may vary per elevation. Window placement, roof line and porches may also vary by elevation. Plans, features, prices and availability are subject to change without notice. VERSION 1.0 11/06/25



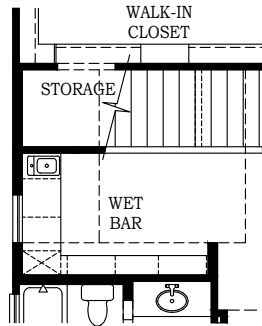
Setting a Higher Standard



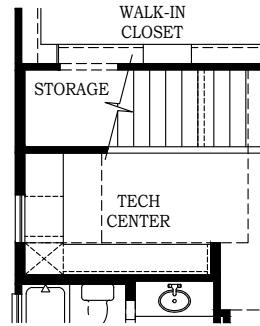
# DAYTON

CHESMAR.com

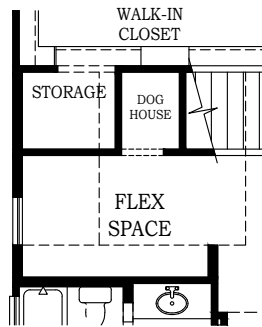
Plan 252935 | 2529 Square Footage | 4 Bedrooms | 3 Baths | 2-Car Garage



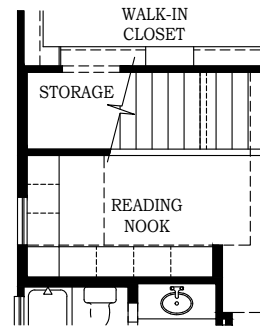
*Opt. Wet Bar  
@Stairwell*



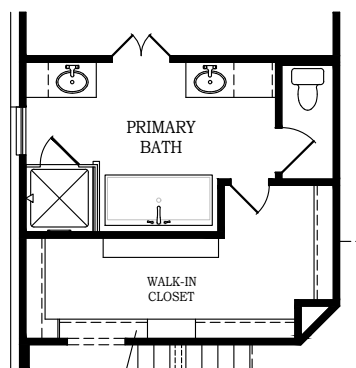
*Opt. Tech Center  
@ Stairwell*



*Opt. Dog House  
@Stairwell*



*Opt. Reading  
Nook @Stairwell*



*Opt. Tub & Shower  
@ Primary Bath*



Square footage and room dimensions are approximate and may vary per elevation. Window placement, roof line and porches may also vary by elevation. Plans, features, prices and availability are subject to change without notice. VERSION 1.0 11/06/25



Setting a Higher Standard



# DAYTON

CHESMAR.com

Plan 252935 | 2529 Square Footage | 4 Bedrooms | 3 Baths | 2-Car Garage



FRONT ELEVATION 'A2'

STUCCO OPTION



Square footage and room dimensions are approximate and may vary per elevation. Window placement, roof line and porches may also vary by elevation. Plans, features, prices and availability are subject to change without notice. VERSION 1.0 11/06/25