



Setting a Higher Standard

chesmar.com

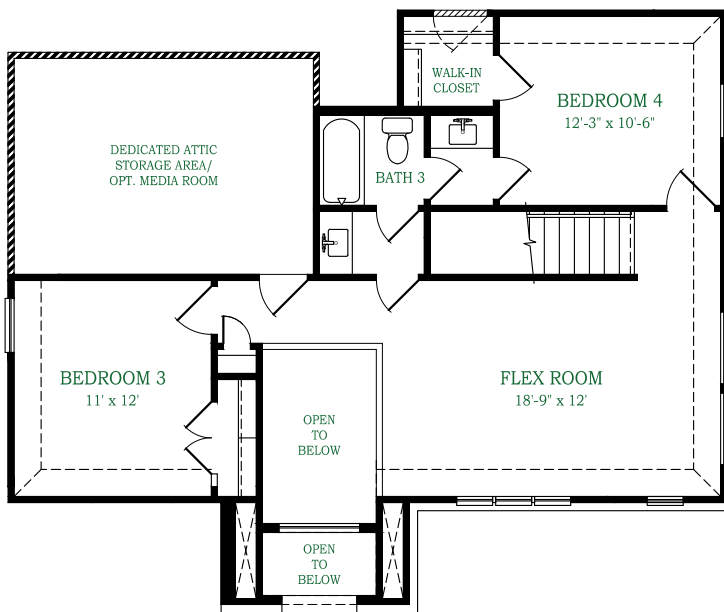
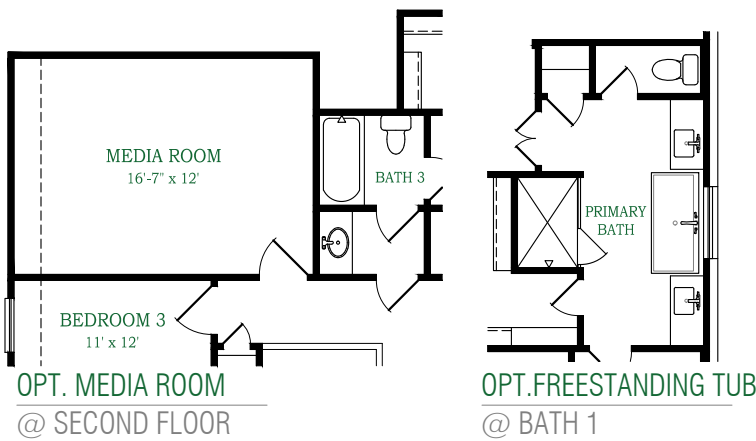
# WESTPOINT

## MADISON

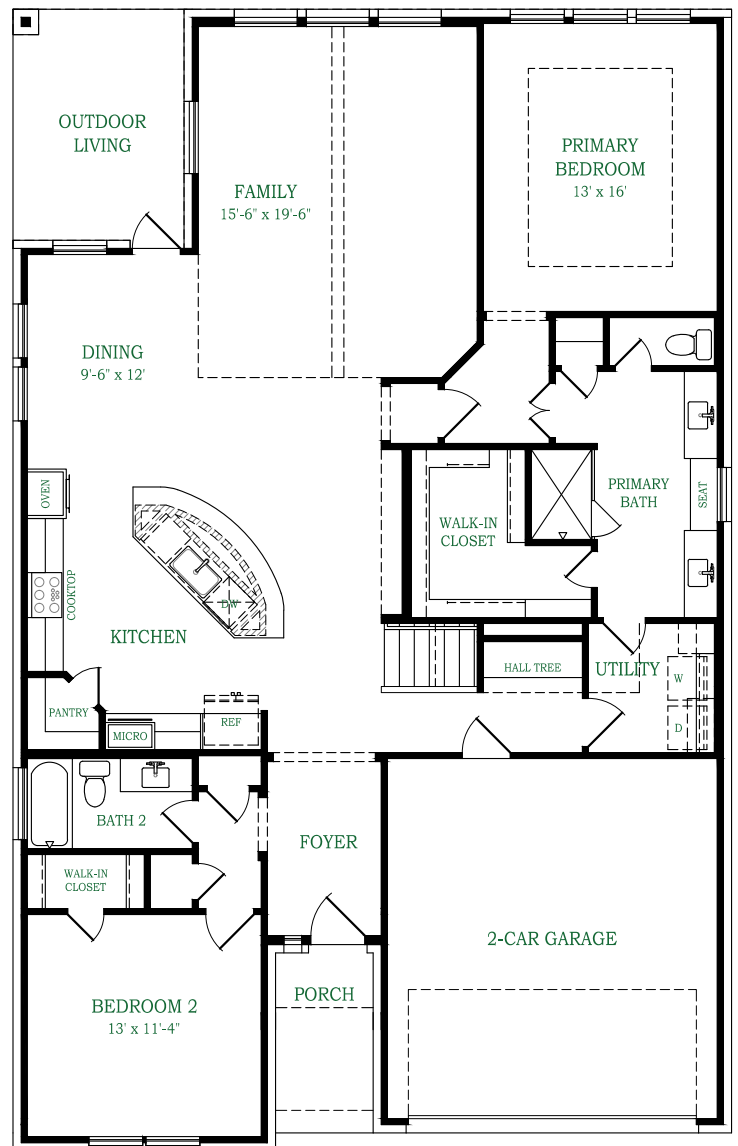
plan 1628 approx. 2617 sqft

### THIS HOME FEATURES | OPTIONS

- 4 Bedroom
- 3 Bath
- 128 Sqft. Outdoor Living
- Study
- Media Room
- Freestanding tub @ Bath 1



## SECOND FLOOR



## FIRST FLOOR

REVISED - 5/13/2026. Square footage and room dimensions are approximate and may vary per elevation. Window placement, roof line and porches may also vary by elevation. Plans, features, prices and availability are subject to change without notice.



**CHESMAR  
HOMES**

*Setting a Higher Standard*

chesmar.com

# WESTPOINT

**MADISON**

plan 1628 approx. 2617 sqft



ELEVATION A



ELEVATION A OPT. STONE



ELEVATION B



ELEVATION B OPT. STONE

REVISED - 5/13/2026. Square footage and room dimensions are approximate and may vary per elevation. Window placement, roof line and porches may also vary by elevation. Plans, features, prices and availability are subject to change without notice.