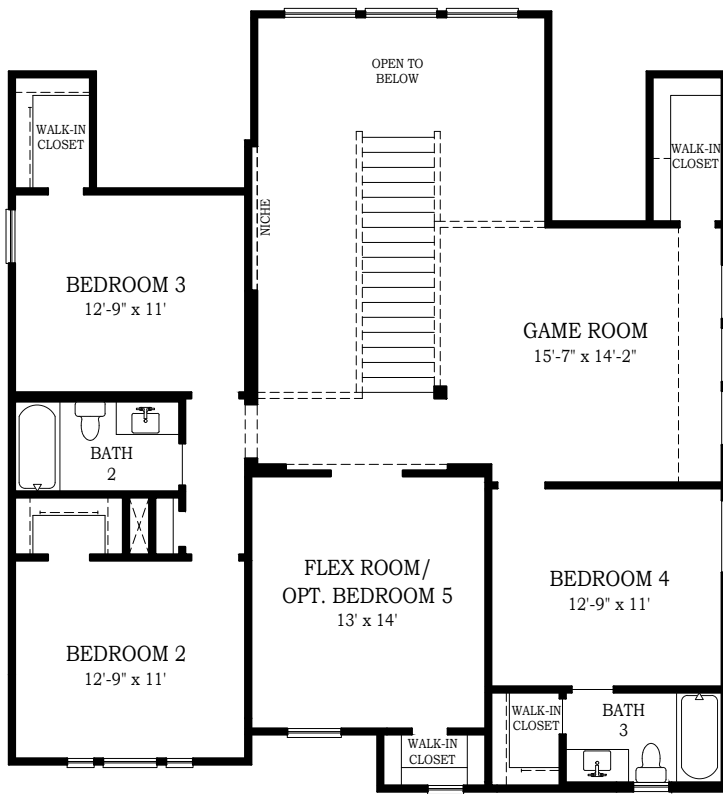




# SHENANDOAH

CHESMAR.com

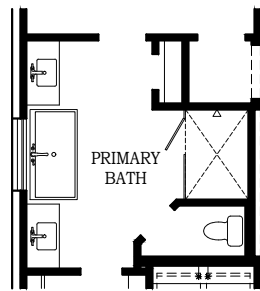
Plan 3024 | 3,024 Square Footage | 4-5 Bedrooms | 3.5 Baths | 2-Car Garage



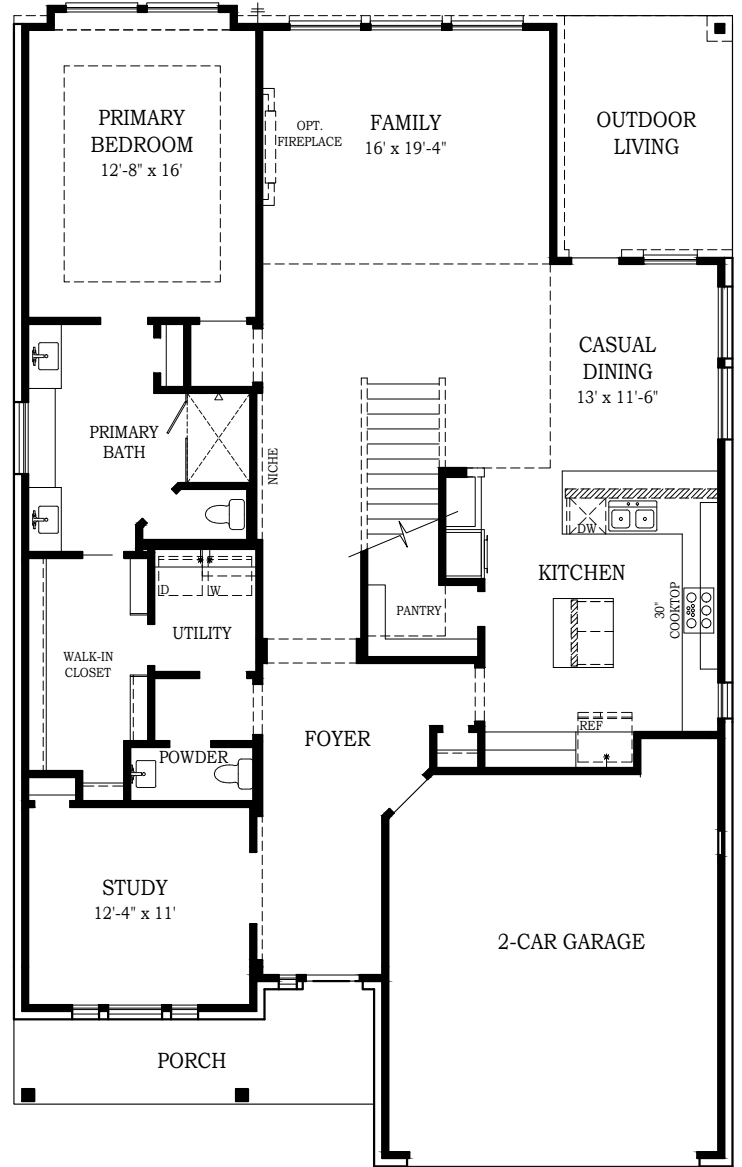
*2nd Floor Plan*



*Opt. Bedroom 5*



*Opt. Tub & Shower @ Primary Bath*



*1st Floor Plan*

ADDITIONAL APPLIANCE  
OPTIONS AVAILABLE PER  
COMMUNITY



# SHENANDOAH

CHESMAR.com

Plan 3024 | 3,151 Living sq. ft. | 3,024 Conditioned sq. ft. | 4-5 Bedrooms | 3.5 Baths | 2-Car Garage



*Elevation A - Craftsman*



*Elevation B - Contemporary*



*Elevation A - Craftsman*  
*STUCCO OPTION*



Square footage and room dimensions are approximate and may vary per elevation. Window placement, roof line and porches may also vary by elevation. Plans, features, prices and availability are subject to change without notice. 9/27/23 V4.0 (SA)

